



## THE WORLD IS YOUR HOME

So you can spend more time  
with your loved ones.



- 03 min. YMCA Club & School
- 04 min. Market
- 08 min. Ghatkopar Railway Station
- 08 min. Ghatkopar Metro
- 09 min. Eastern Express Highway
- 15 min. R-City Mall
- 15 min. Odeon Mall

*Rajas Residency*  
A project by Mohite Realtors

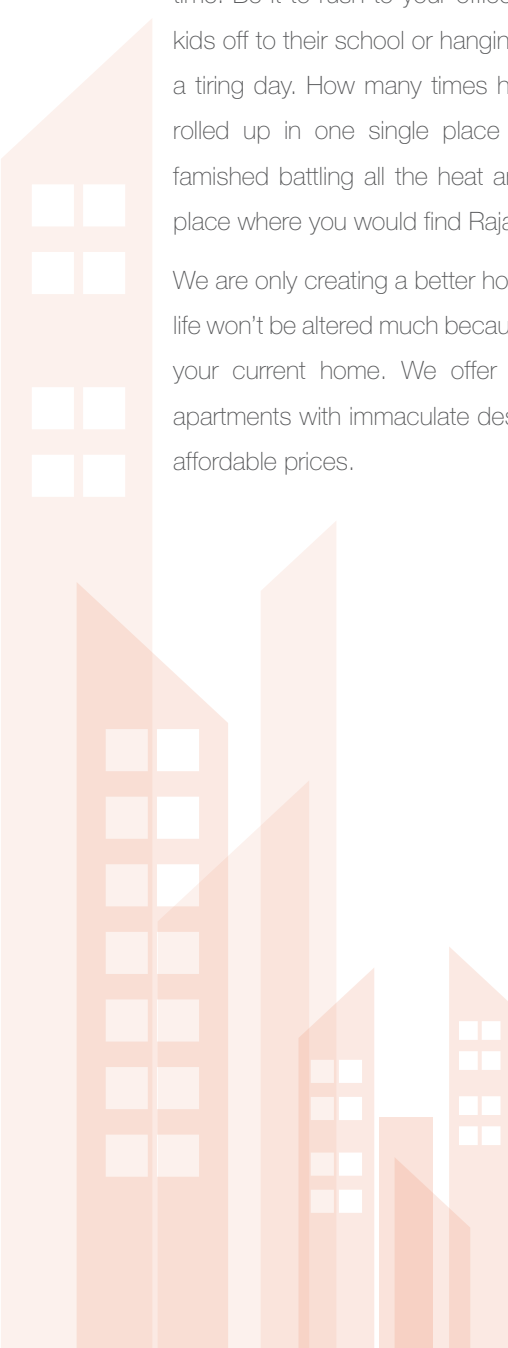
## ABOUT PROJECT

### Why select Rajas Residency

Being at the centre of everything is what everyone dreams while living in a busy city. Rajas Residency is one of the residential ventures of Mohite Realtors. Rajas Residency comes up with this exotic project of a stand-alone building with 26 flats right at the centre of the city. We are a dedicated group of builders who thrive to live the dream of making this city a hustle-free place to live. Keeping that in mind, our project is located right in the middle of everything yet gives you a sense of a peaceful home where you can relax.

Our mission and motto is to keep your homes closer to the places where your everyday life revolves around so that you spend more time with your loved ones. And what's with all other promises of luxury if you never get enough time to enjoy them. What we offer is your priceless time! Be it to rush to your office on a busy morning or dropping your kids off to their school or hanging out with your friends and family after a tiring day. How many times have you wished that all this could be rolled up in one single place just so because you won't be that famished battling all the heat and crowd? This is exactly the kind of place where you would find Rajas Residency!!!

We are only creating a better home right at your locality. Your everyday life won't be altered much because you are not going to be any far from your current home. We offer 3 BHK, 2 BHK as well as 1 BHK apartments with immaculate design and advanced parking facilities at affordable prices.



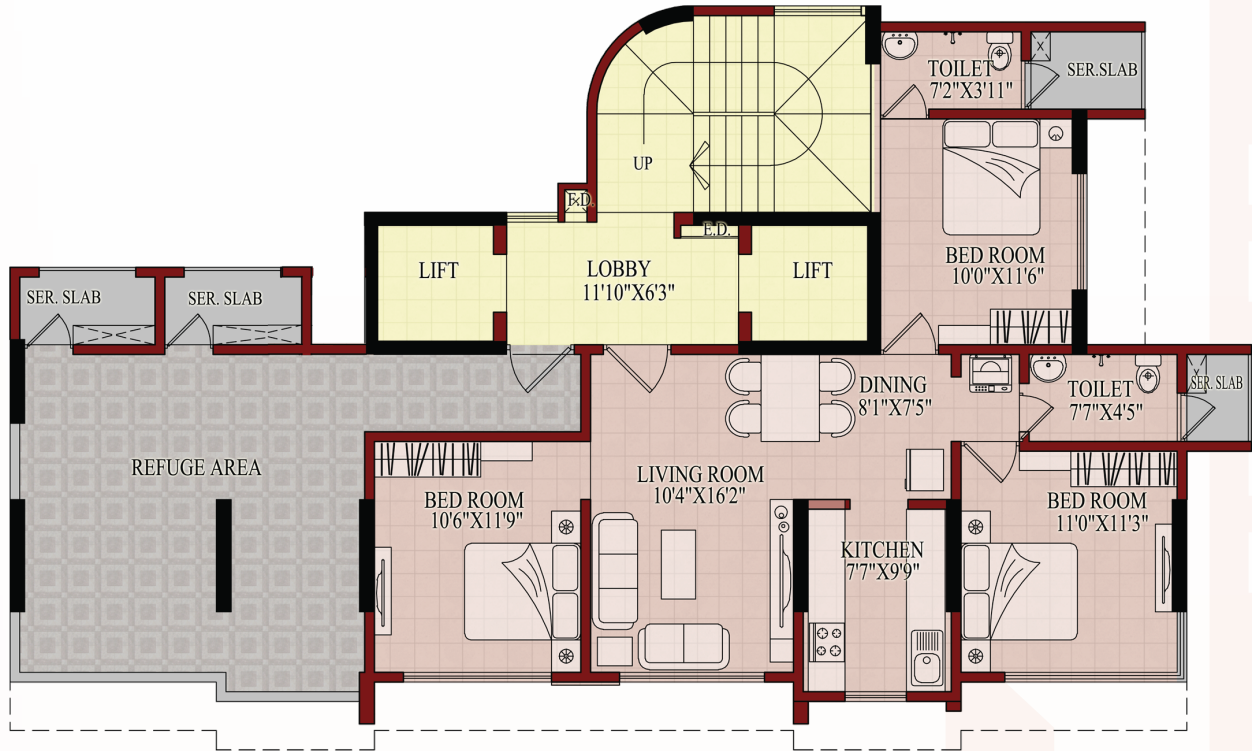




*Rajas  
Residency*



## PLAN 1



UNIT: 3 BHK

### Floor 8<sup>th</sup>

- Kitchen - 7'7" x 9'9"
- Living - 10'4" x 16'2"
- Dining - 8'1" x 7'5"
- Lobby - 11'10" x 6'3"
- Bedroom - 10'6" x 11'9"
- Bedroom - 11'0" x 11'3"
- Toilet - 7'7" x 4'5"
- Bedroom - 10'0" x 11'6"
- Toilet - 7'2" x 3'11"



## PLAN 2

UNIT: 2 BHK

**Floor 2<sup>nd</sup> to 7<sup>th</sup>**

**Floor 9<sup>th</sup> to 15<sup>th</sup>**

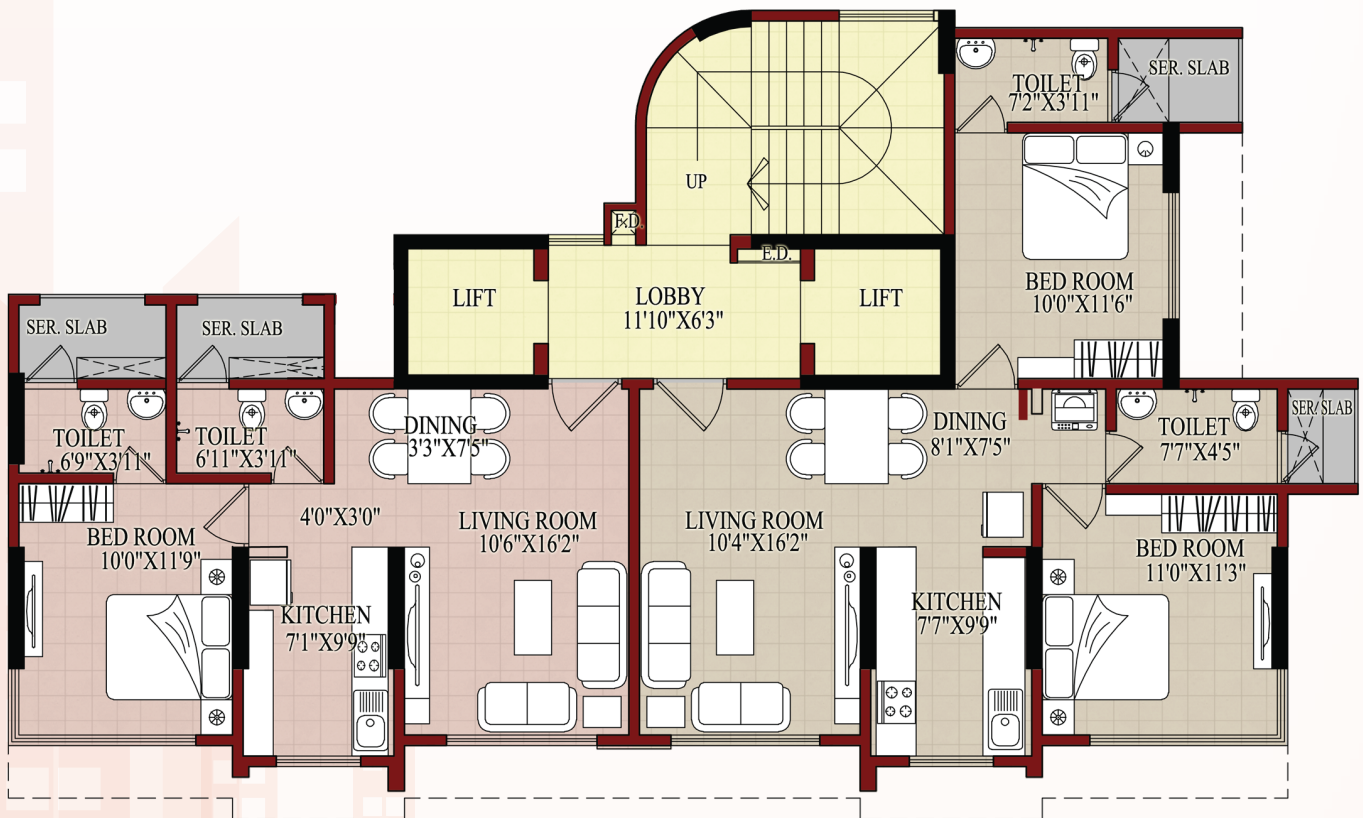
- Kitchen - 7'7" x 9'9"
- Bedroom - 11'0" x 11'3"
- Living - 10'4" x 16'2"
- Toilet - 7'7" x 4'5"
- Dining - 8'1" x 7'5"
- Bedroom - 10'0" x 11'6"
- Lobby - 11'10" x 6'3"
- Toilet - 7'2" x 3'11"

UNIT: 1 BHK

**Floor 2<sup>nd</sup> to 7<sup>th</sup>**

**Floor 9<sup>th</sup> to 14<sup>th</sup>**

- Kitchen - 7'1" x 9'9"
- Bedroom - 10'0" x 11'9"
- Living - 10'6" x 16'2"
- Toilet - 6'9" x 3'14"
- Dining - 3'3" x 7'5"
- Toilet - 6'11" x 3'11"





## YOUR SAFETY OUR PRIORITY

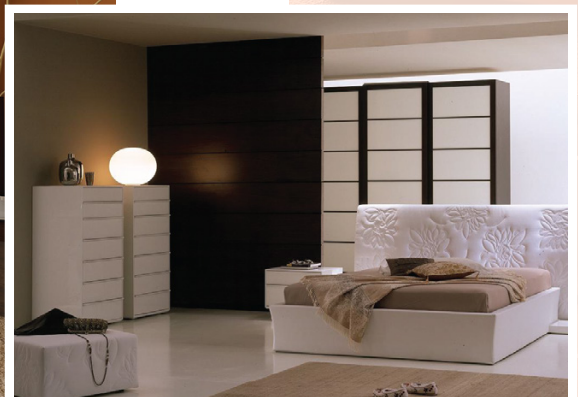
We assure that the buildings you reside are equipped with:

- Earthquake resistant structure
- Artistically designed entrance and lift lobbies
- Acrylic paint with texture for external walls
- Inverter for common lighting
- Anti-termite treatment
- Two reputed brand elevators
- Power saver and long lasting LED lighting
- Reputed stack parking system

## OPTIMUM FEATURES AT COMPETITIVE PRICE

Your flat is carefully designed to have:

- Decorated Entrance lobby
- T.W. Framed flushed doors with laminate finish
- Anodised Aluminium sliding windows
- Gypsum finished walls with luster paints
- Concealed copper wiring with modular switches
- Granite kitchen and service platform with steel sink
- Designer toilets with instant geyser
- Concealed plumbing with premium quality fittings
- Intercom facility and CCTV security cameras
- 2' x 2' Vitrified tiles flooring



Images shown are for illustration purposes only



## ABOUT MOHITE GROUP

### Built on trust. Enriched with values.

Mohite Realtors, promoted by Mr. Pramod Mohite, a Civil Engineer by profession, is a team of highly trained and experienced civil engineers involved in the field of civil construction of industrial, commercial and residential projects. With a rich hands-on experience of more than 20 years, we have to our credit a successful track record of executing a wide range of Industrial, Civil Construction Projects for the Pharmaceuticals, Bio-Pharmaceuticals, Chemicals, Agrochemicals, Packaging and Engineering sectors.

Mohite Realtors has also been involved in executing Commercial & Residential Projects for Housing Societies, Schools and Hospitals.

Our organizational capabilities and project management skills have provided on-time deliveries of complex industrial projects. Mohite Realtors, has grown and established itself on the three tenets of Trust, Integrity and Honesty.

As a successful and a rapidly growing Civil Construction Company, we are setting our limits high enough to test and challenge our abilities to the fullest of our potentials.





## SPECTACULAR LOCATION & MAP

We understand that a home is just not the comfort zone but a lifestyle which you have been following for years may be. Keeping this in mind, we offer you affordable homes at your locality itself, only closer to the central attraction points.

Just so you know that these are facts\* that we state. Our project is located:



**Eight minutes away from the**  
Ghatkopar Railway Station  
Ghatkopar Metro Station



**Fifteen minutes away from the**  
Odeon Mall  
R-City Mall

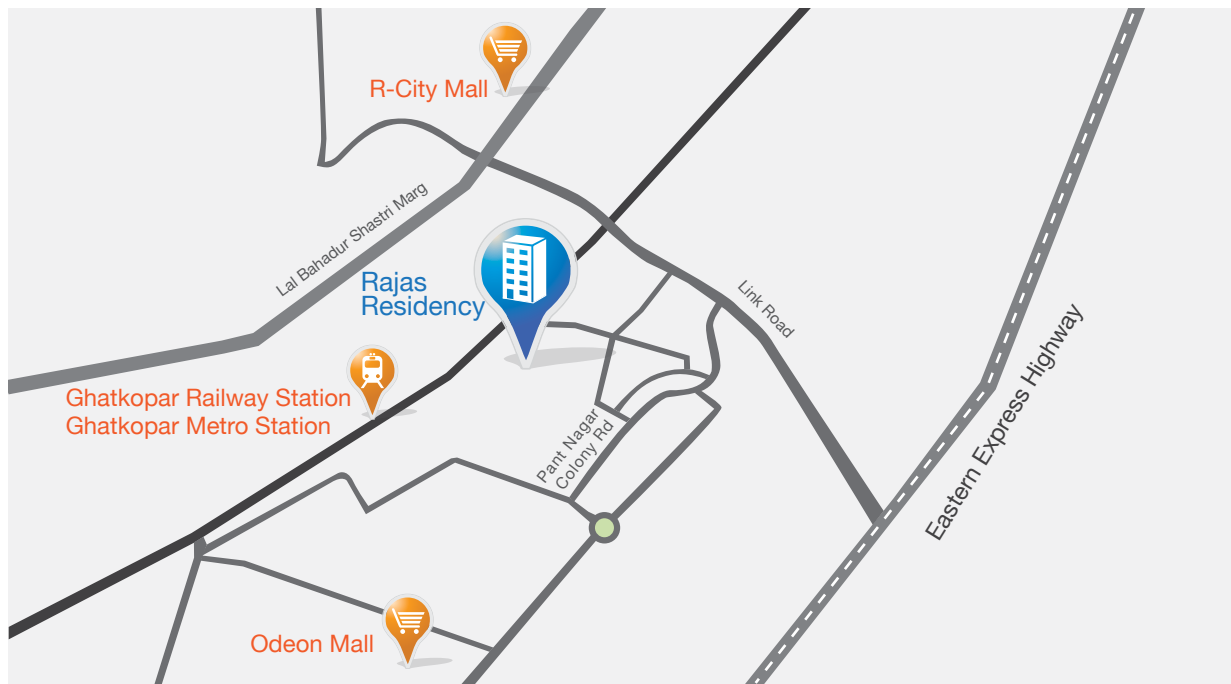


**Four minutes away from the**  
Market  
Police Station



**Three minutes away from the**  
YMCA Club  
School

This kind of proximity is one of the key features of Rajas Residency. These are early days when you could own a home at the exactly right place at a perfect time. If it was your dream to own an apartment in the city and not just the outskirts by the margin of a few thousands you are on-board.



\*under normal driving conditions



### ADDRESS:

P. S. Mohite Builders & Developers, Plot No. X-13/1-3,  
New Rajnigandha, Behind Kamat Hospital, MIDC Res. Zone,  
Dombivli (East) 421 203. Tel. No.: +91 251 - 2444741 / 2444986  
Email id: info@mohiterealtors.com | Website : www.mohitegroup.in

Architect : Deole Brothers

Consulting Architect : Sushil Jade & Associates

Structural Engineers : Epicons Consultants Pvt. Ltd.

PMC : Challenge Consultants

### SITE:

Plot No. O. B. 1, Opp. Building No. 81, Near Shivaji Statue,  
Pant Nagar, Ghatkopar (East), Mumbai 400 075  
Contact No.: +91 98209 32039 (Mr. Bhushan Mhatre)